

# E- series Floor grinder and polisher Manual

Grinding and Polishing for concrete, marble, granite, terrazzo with various grits of metal diamond blades and resin bonded diamond plates for coarse grinding, medium grinding, fine polishing, crystallizing, cleaning, preparation, maintenance. Removing painting, epoxy, urethane, glues, polyurethane and mastics coatings

## **.Handling instruction**

### **1.Installation of grinding disc:**

**First, please put the handles in the vertical position then press them and turn up the mounting disc, after this please stick the grinding pad on the mounting disc and meanwhile install the skirting belt .**

**2.Second , put the machine to the ground lightly and let the slices keep close to the floor.(please put down gently)**

**3.Third, adjust the machine to the suitable level and make the level bubble in the middle.**

**4.Fourth , fix the power cord.(take care of your safety when operating)**

**5.Fifth, adjust the handlebar and keep the handle to the suitable position for operating.**

**6.Sixth, open the water valve to adjust the quantity of water.**

**7.Turn on mains switch and the machine starts working.**

# **.Safety instructions**

- 1.Operators should wear waterproof and insulative shoes.**
- 2.Before using you should check the power cord carefully. When aging or disrepair occurs you should change the power cord immediately.**
- 3.The external connecting line should be connected with the groundwire in order to avoid leakage of electricity.**
- 4.Make sure that the external connecting line should be more than 4 square meters (within 30meters)**
- 5.When the voltage is so low that the machine stops working, please close the power source then wait for about 3 minutes, then connect the power source again, after this the converter will recover automatically.**
- 6.When you fix the power cord you must make sure the voltage is suitable to the voltage that the machine requires. Besides, you should gurantee the changes of the voltage below 10% of the prescriptive voltage.**
- 7. During the process of grinding, please check the condition of level indicator and the slices . When they worn out overly the mounting disc will be damaged.**
- 8. People should not sit on the machine in order to avoid overloading or hurting by creepage of the machine.**

# **.Matters need attention**

## **1. Overload of electric motor**

**1.1 The electric motor will be overloaded in the following situation.**

**1.1.1 V/F curved shape is set improperly or the torque data is too much**

**1.1.2 The voltage of the electric is on the low side**

**1.1.3 The protection coefficient of the electric motor is set inappropriate**

**1.1.4 The electric motor works unsmoothly or the load of it is too heavy**

**1.1.5 The motor overloads at very low speed during a long time**

**1.2 Instructions for dealing with these**

**1.2.1 Reset the V/F curved shape and the torque data**

**1.2.2 Check the power source**

**1.2.3 Check the setting up number of [ E-57]**

**1.2.4 Adjust the working load or choose another inverter whose capacity matches the electric motor**

**1.2.5 When long time and low speed working needed, please choose the exclusive frequency conversion electric motor**

## **2. Overload of inverter**

**2.1 The inverter maybe overloaded in the following situation**

**2.1.1 The load is too heavy**

**2.1.2 Time for accelerating is too short**

**2.1.3 After momentary stopping, the electric motor which is under the working condition is initiated**

**2.1.4 V/F curved shape is set improperly or the torque data is too much**

**2.2 Instructions for dealing with these**

**2.2.1 Change another inverter whose capacity is matching**

**2.2.2 Prolong the accelerate time**

**2.2.3 Initiate it when the electric motor stopps completely or set the [E-30] to be "2"**

**2.2.4 Renew the V/F curved shape or the torque data**

## **3. Interior of the inverter is too hot**

**3.1 Under these circumstances the inside of the inverter maybe hot**

**3.1.1 The temperature of the environment is too high**

**3.1.2 When the fans are cooling and stopps working**

**3.1.3 Ventilation condition of the inverter is poor**

**3.1.4 When the frequency of the carrier wave is too high**

**3.2 Instructions for solving these**

**3.2.1 Improve the surrounding environment**

**3.2.2 Change the fans**

**3.2.3 Improve the ventilation and heat loss environment around the inverter**

**3.2.4 Check the configure of [E-20] and [e-21]**

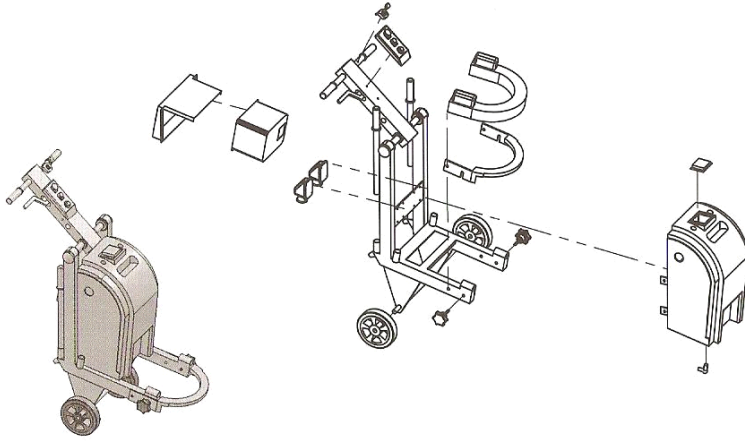
**4. The power led is working but the working light is out of working and only when you press the reset button it will work , When this appears you should change another electric motor because the original one maybe broken.**

**5. When the power led stopped working or the light of power winking but on the display screen there appears power, it says that poor contact occurs.**

**6. When hunting of speed control occurs or the speed governor does not work, you should change another governor, because the governor maybe damaged.**

**7. Power led and working light works well and the display screen is also all right but the machine can not work , when this happens there maybe something wrong with the electric motor, perhaps poor contact appears about the connecting line, so you should check the connecting line of the electric motor carefully.**

## .Decomposition of machines



① Inverter frame

② Inverter

③ Handlebar

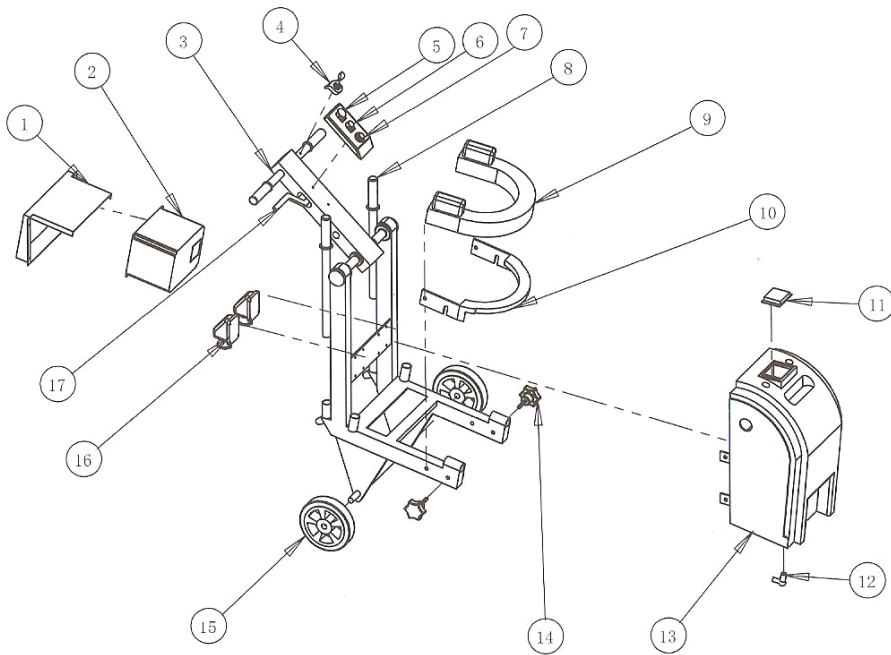
④ Water valve

⑤ Stop switch

⑥ Start switch

⑦ Speed control

⑧ Carrying pole



⑨ Additional weight

⑩ Additional weight frame

⑪ Control panel

⑫ Water outlet

⑬ Water tank

⑭ Wheel

⑮ Separate handwheel

⑯ Power output sockets

⑰ Height adjusting handlebar

## . Circuit diagram of the Inverter

